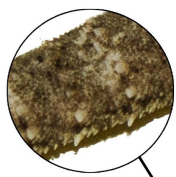




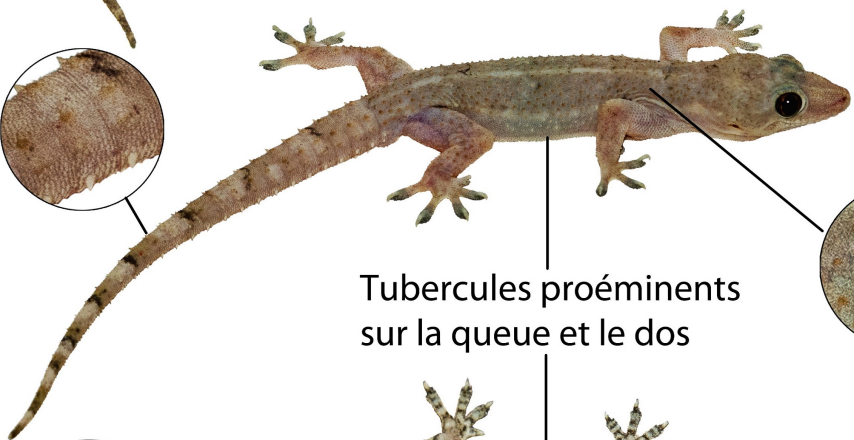
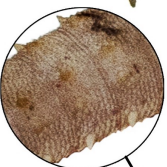
# Les Geckos nocturnes de La Réunion

## Geckos nocturnes à tubercules

Tubercules proéminents sur la queue

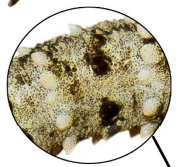
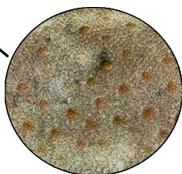


*Hemidactylus  
frenatus*



*Hemidactylus  
mercatorius*

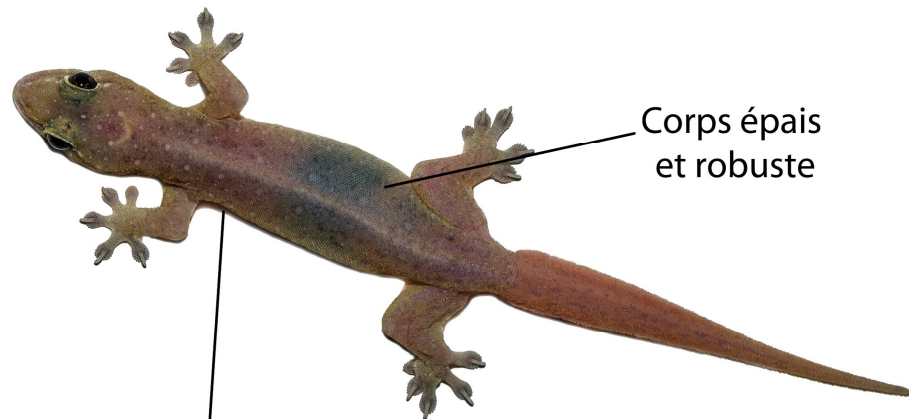
Tubercules proéminents  
sur la queue et le dos



*Hemidactylus  
parvimaculatus*

## Geckos nocturnes à peau lisse, sans tubercules

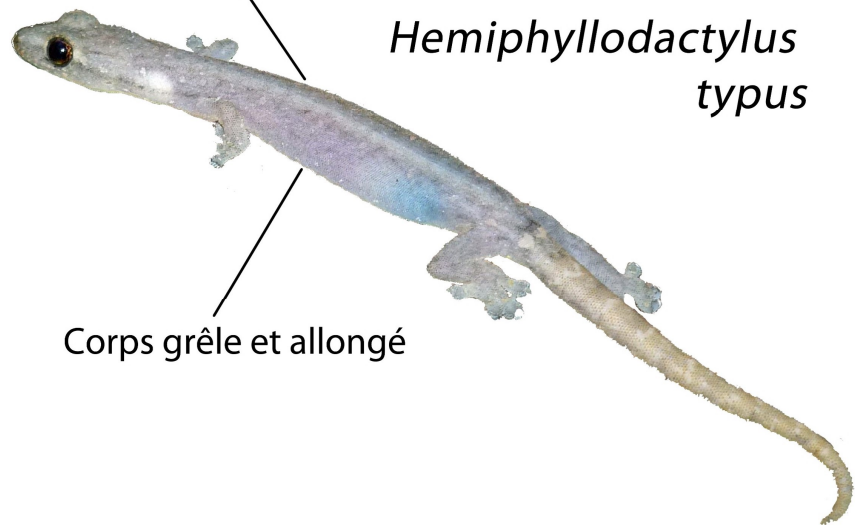
*Gehyra mutilata*



Corps épais  
et robuste

Peau lisse, sans tubercules

*Hemiphyllodactylus  
typus*



Corps grêle et allongé



# Les Geckos nocturnes à tubercules de La Réunion

*Hemidactylus frenatus*

*Hemidactylus mercatorius*

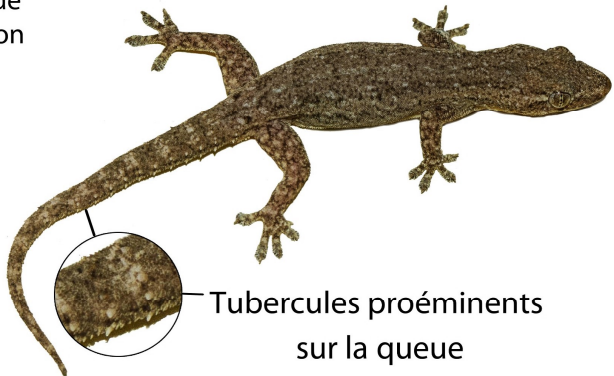
*Hemidactylus parvimaculatus*

Phases de coloration

S  
o  
m  
b  
r  
e

I  
n  
t  
e  
r  
m  
é  
d  
i  
a  
i  
r  
e

C  
l  
a  
i  
r  
e



Tubercules proéminents sur la queue

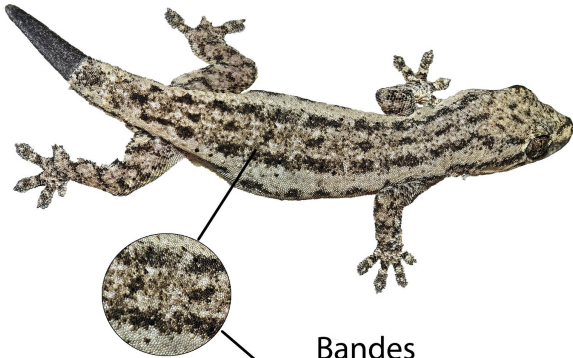


Bandes transversales sombres sur le dos

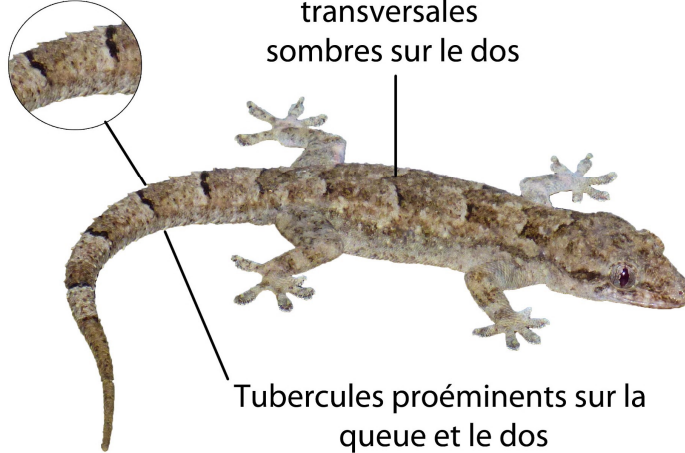


Tubercules coniques proéminents sur la queue et le dos

Petites taches sombres



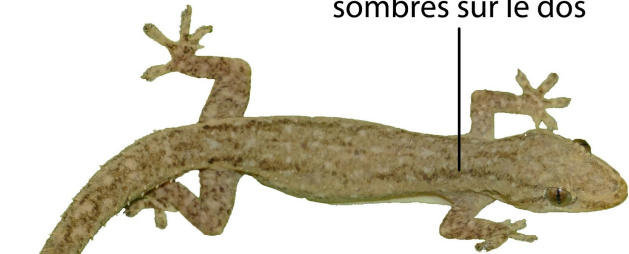
Bandes longitudinales sombres sur le dos



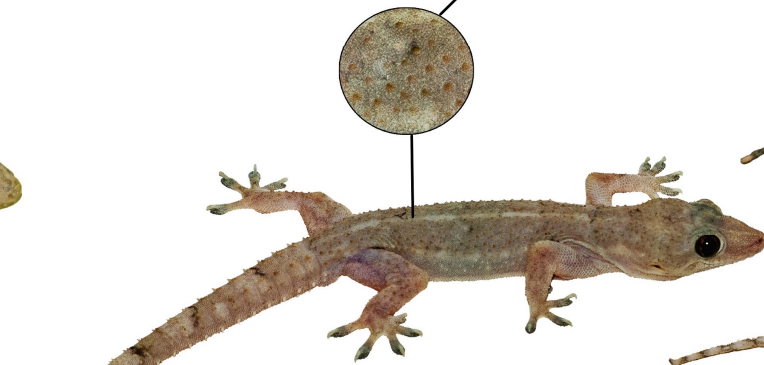
Tubercules proéminents sur la queue et le dos



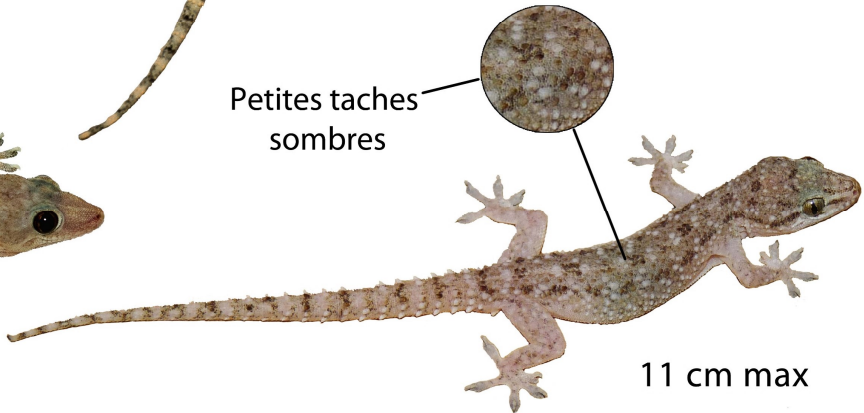
Petites taches sombres



12 cm max



14 cm max



11 cm max



Plusieurs colorations possibles : la coloration n'est pas un critère d'identification



# Les Geckos nocturnes sans tubercules de La Réunion

Phases de coloration

S  
o  
m  
b  
r  
e

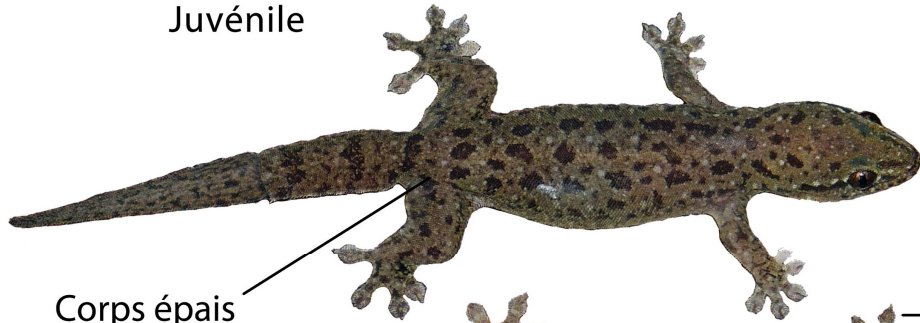
I  
n  
t  
e  
r  
m  
é  
d  
i  
a  
i  
r  
e

C  
l  
a  
i  
r  
e



Juvénile

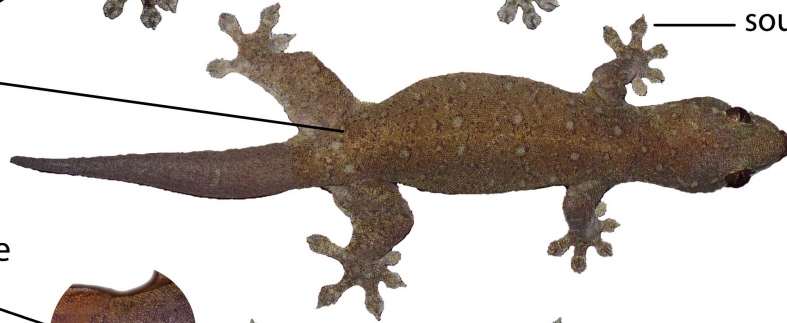
*Gehyra mutilata*



Corps épais et massif



Lamelles sous-digitales



Queue pincée à la base



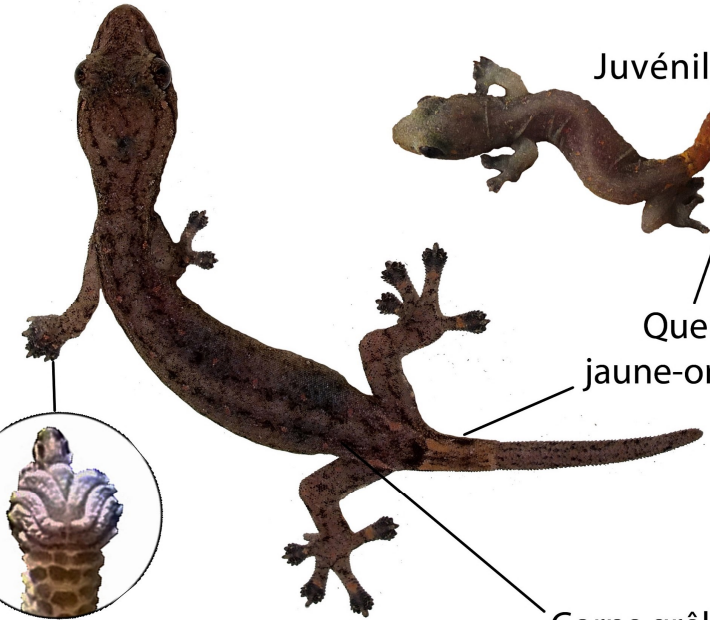
12 cm

*Hemiphyllodactylus typus*



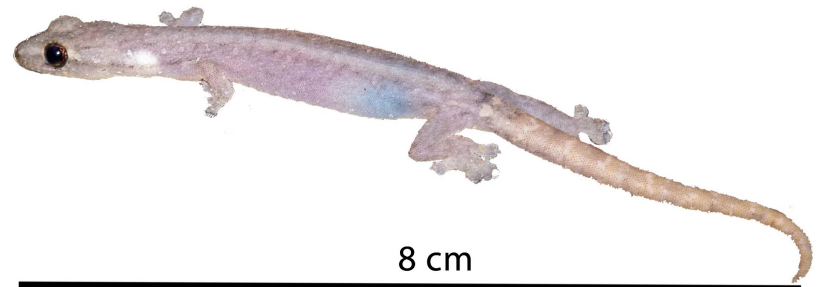
Juvénile

Queue jaune-orangée



Lamelles sous-digitales

Corps grêle et allongé



8 cm

⚠ Plusieurs colorations possibles : la coloration n'est pas un critère d'identification